

LTE eNodeB VBS-W10

Compact and Versatile

OVERVIEW

VNL's LTE VBS is a compact, power-efficient system with superior radio performance, designed for radio product applications. It has an evolving radio portfolio that allows flexibility to support a wide range of scenarios, enabling quick and efficient radio installations.

Self Organising Network (SON)

- SON can self-configure, self-connect, self-heal and self-optimise
- Supports do-it-yourself (DIY) installations, operations & maintenance

Covers a variety of deployments:

- **Remote Enterprises** like mines, off-shore oil fields, shipping yards etc
- **Remote Communities** situated in difficult terrain, isolated islands, high altitude etc
- **Public Safety Agencies** in need of rapid emergency response
- **Captive Network** for strategic and tactical applications

BENEFITS

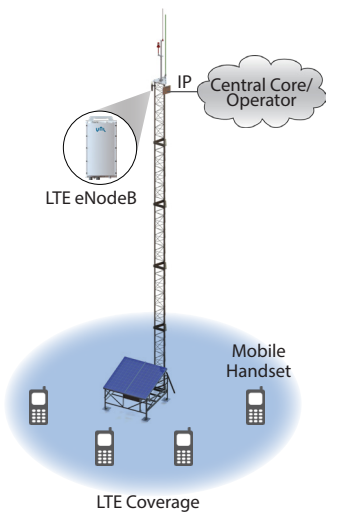
- Low CAPEX, low OPEX
- 100% solar (optional)
- Do it yourself (DIY) installation
- IP65 casing ruggedized for outdoors



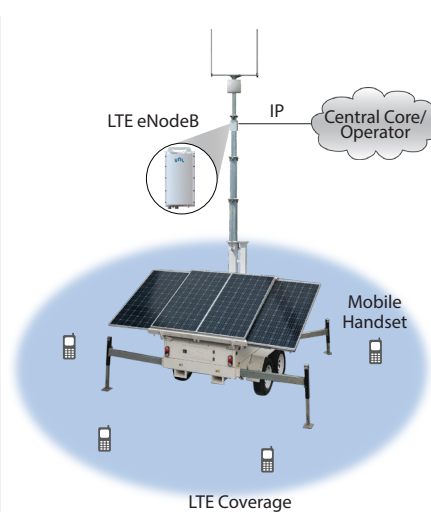
LTE eNodeB VBS-W10

BASIC FEATURES

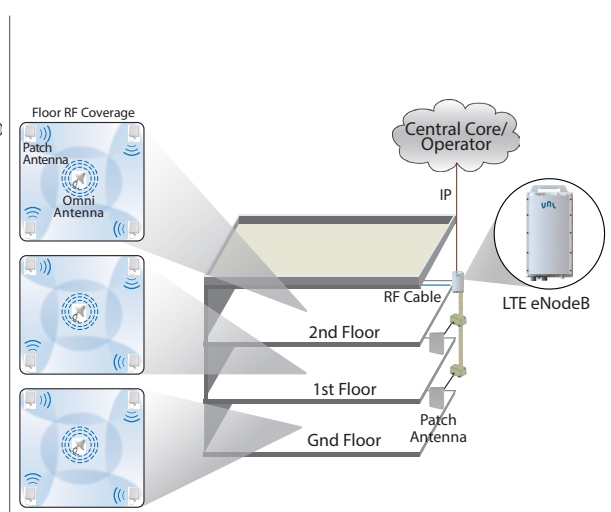
- *Mobility Management*
- *High Speed Data*
- *Voice - CSFB, VoLTE*
- *Video - ViLTE*
- *SMS*
- *Network Security*
- *Location Services*
- *2x2 MIMO*



Typical eNodeB Outdoor Site with IP radio backhaul



Rapid Response typical LTE eNodeB CoW Site



Typical LTE eNodeB Indoor deployment with a few indoor patch, omni antennas and IP backhaul

Related Products: LTE eNodeB VBS-W2

LTE eNodeB VBS-W10

SPECIFICATIONS

GENERAL	
Type	Self Contained Outdoor Unit
RADIO	
Flexible Channel Bandwidth	5, 10, 15*, 20 MHz
Bands	All 3GPP LTE Bands - TDD and FDD
MIMO	2x2
Max Output Power	2x5W
FEATURES	
O&M	TR069 / Web
SON	Yes
Synchronisation	GPS / GLONASS, IEEE 1588 v2
PHYSICAL INTERFACES	
Antenna Ports	2x N-Female
Backhaul Port	RJ45: 1000BaseT, SFP (Optional): 1000BaseX
LED Indicator	1
Network Scan Port	SMA-Female
Earthing Point	1
MECHANICAL	
Dimensions (HxWxD)	473x260x222 mm
Weight	16 Kg
Mounting	Wall and Pole Mount Options
ELECTRICAL	
Power Supply	48V DC
Power Consumption	110W
ENVIRONMENTAL	
Operating Temperature	-40°C to +55°C
Environment	Outdoor Class with IP65

*15MHz bandwidth is for FDD System only

VNL logo is a registered trademark of Vihaan Networks Limited.
VNL assumes no responsibility for any inaccuracies in this document and reserves the right to revise this document without notice.

VNL-DS-LTE eNB VBS-W10 | October 2020 | PA25
© 2020 VNL | All rights reserved

CORPORATE HEADQUARTERS

Vihaan Networks Limited
21-22, Phase IV, Udyog Vihar
Gurgaon 122 015, Haryana, INDIA
Tel +91 124 265 7600
www.vnl.in